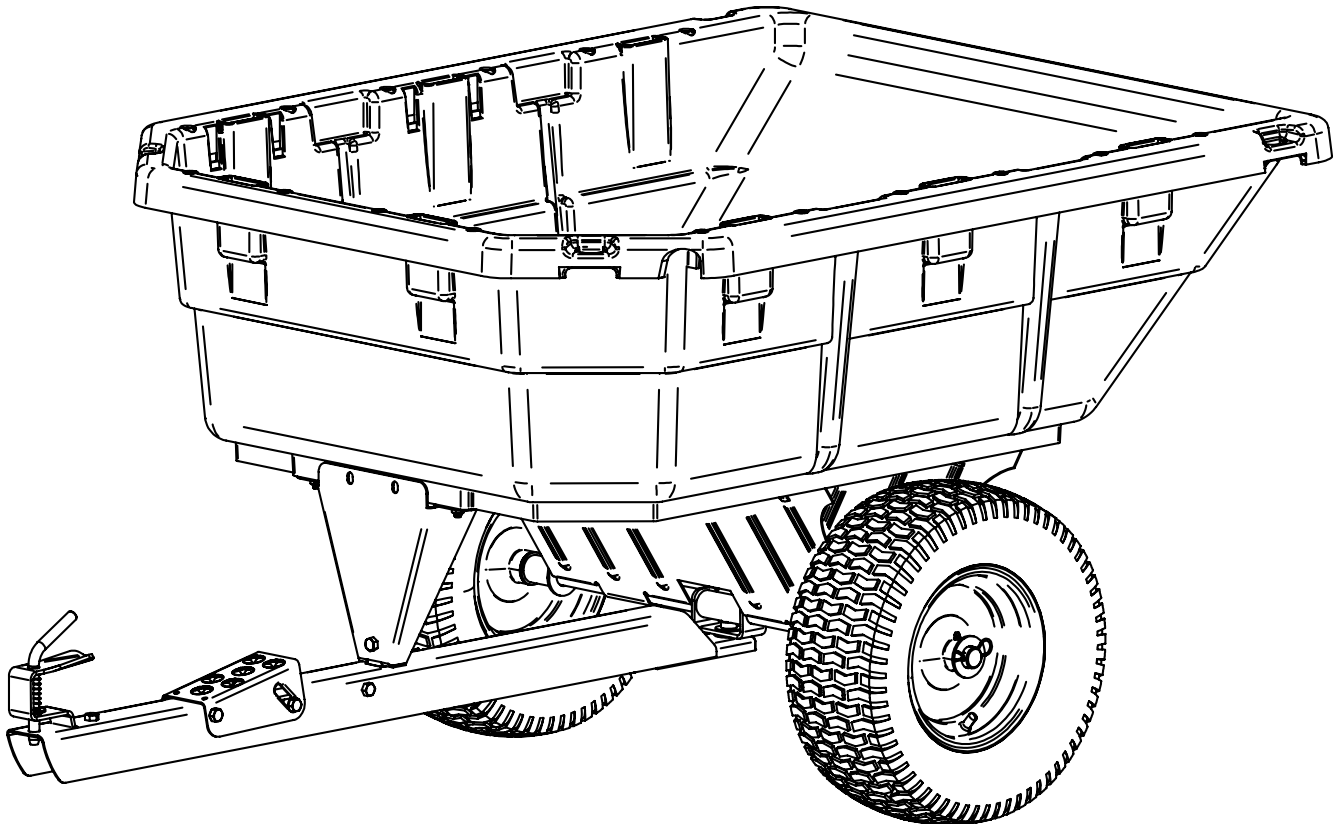


Jrco



GWG311138

15 cu ft POLY SWIVEL DUMP CART

U.S. Patent No. 8,496,298 9,056,573 9,242,588



**READ AND FOLLOW ALL SAFETY RULES AND OPERATING
INSTRUCTIONS BEFORE USING THIS EQUIPMENT**

Safety Rules



This is the safety alert symbol. It is used to alert you to potential personal injury hazards. Obey all safety messages that follow this symbol to avoid possible injury or death.

Read and understand all safety rules and operating instructions before using this tractor attachment.

Follow all safety rules and operating instructions provided by your vehicle's manufacturer when using attachment.

Never allow children or untrained persons to operate vehicle or attachment.

Do not exceed the vehicle manufacturer's towed weight limit.

Reduce vehicle speed and allow extra stopping distance when towing heavy loads.

Reduce vehicle speed and towed weight when operating on slopes.

Operate up and down slopes, never across the face of slopes.

Do not carry passengers on vehicle or attachment.

Avoid sudden turns or maneuvers.

Do not tow attachment on public roadways.

Do not remove warning decals from product.

Check product for worn, loose, or damaged parts before each use. If any damage is present, repair the product before using.

Check product for loose or missing fasteners before each use. Tighten or replace fasteners as needed before using.

Do not exceed vehicle speed of 6 miles per hour when towing Dump Cart.

Do not exceed Dump Cart rated weight capacity of 1200 pounds.

Warranty

IF YOU ARE MISSING PARTS DO NOT RETURN TO STORE

Email warranty@gnedi.com or call 1-866-297-4918

Attach Receipt Here:

Before you call, please email our customer service team at warranty@gnedi.com with the following:

1. A description of the issue you are experiencing.
2. Photos of the issue that include an overall view and detailed view from multiple angles.
3. If applicable, a short video showing the issue.

Replacement Parts:

You can place your parts order online at www.gnedi.com.

- You can also reach our Repair Parts Team at 1-855-388-9848.
- If you are ordering replacement part(s) for your product, please note that some parts are only available as a repair kit.

If this product fails due to a defect in material or workmanship within THREE YEARS from the date of purchase, we will at our option, only with receipt of purchase, repair or replace it free of charge. This warranty excludes tires, wheels, brushes and bag, which are expendable and become worn during normal use.

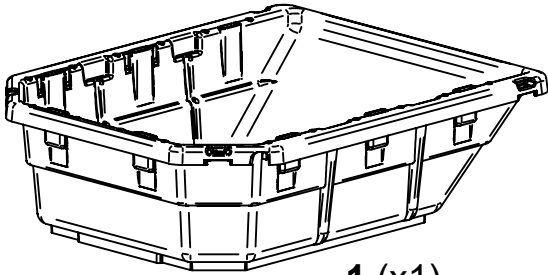
This warranty does not cover:

- Repairs necessary because of operator abuse or negligence.
- Equipment used for commercial or rental purposes.
- Paint that is worn or faded due to normal use or exposure.
- Product degradation or failure due to corrosion or its effects.

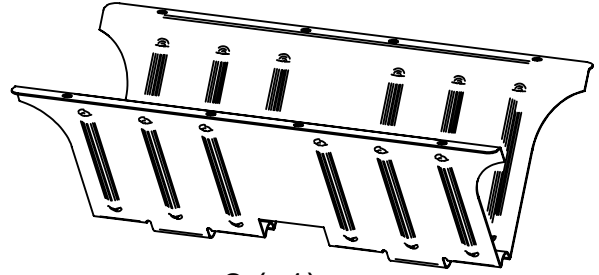
To arrange for product repair visit **www.gnedi.com** and fill out the warranty claim form. You can also call 1-866-297-4918 to speak to our Customer Service Team.

This warranty gives you specific legal rights, and you may also have other rights which may vary from state to state. This warranty applies only while this product is in use in the United States.

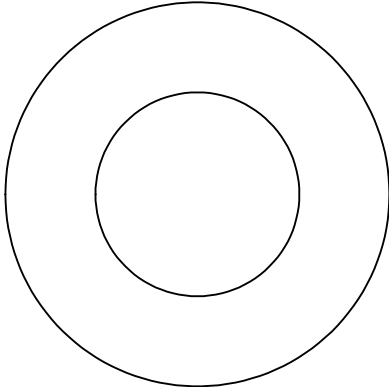
Carton Contents



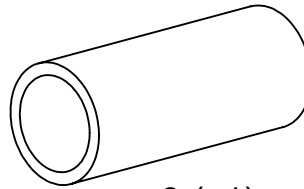
1 (x1)



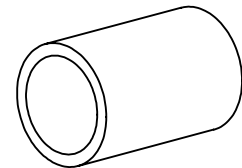
2 (x1)



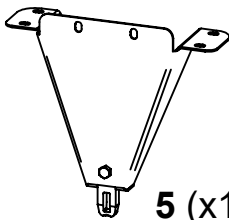
10 (x4)



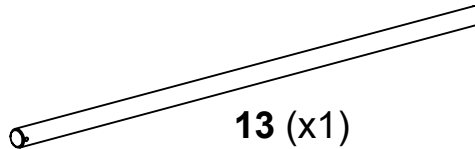
9 (x1)



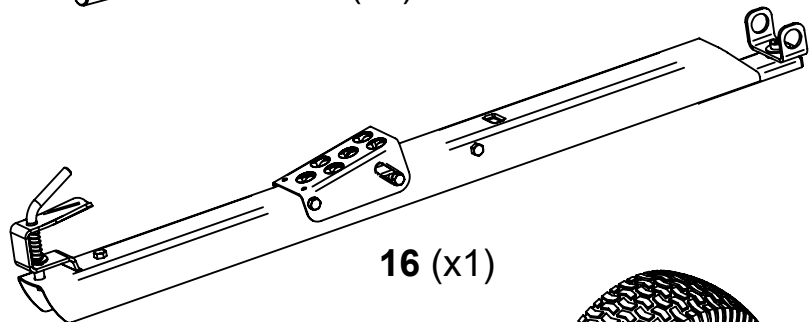
11 (x2)



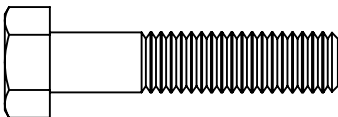
5 (x1)



13 (x1)



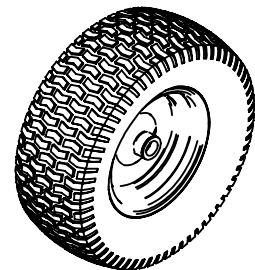
16 (x1)



3 (x12)



4 (x12)



14 (x2)

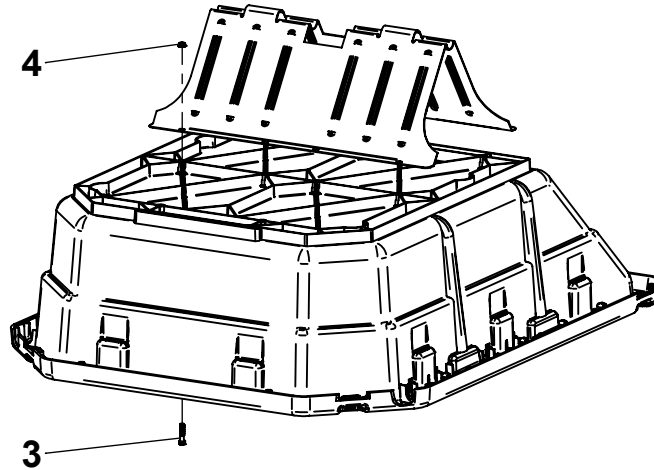
TOOLS REQUIRED FOR ASSEMBLY:

- 1/2" Wrench or Socket
- Grease Gun

Assembly Instructions

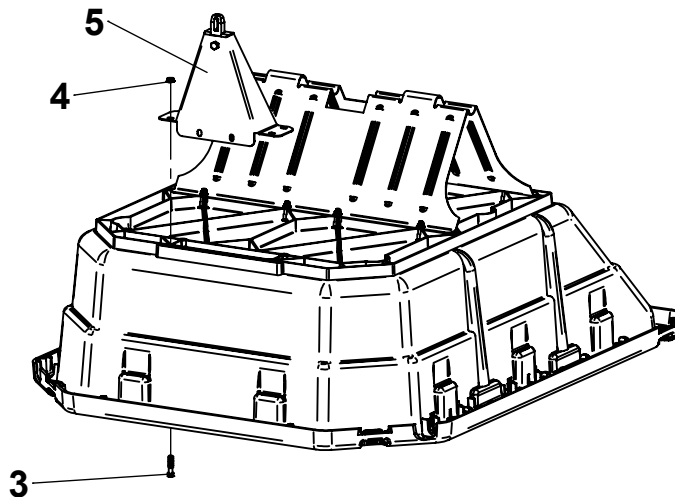
1

Attach Undercarriage (2) to Poly Body (1) with Hex Bolt (3) and Nut (4). Tighten hardware.



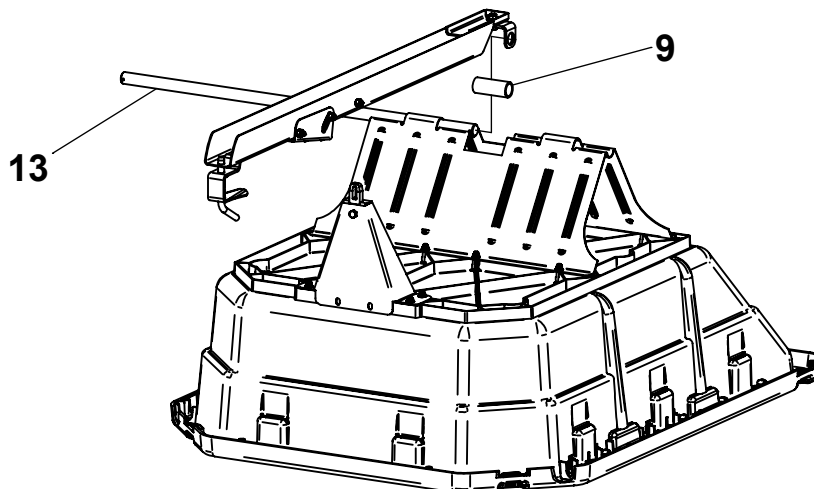
2

Attach Front Support (5) to Poly Body (1) with Hex Bolt (3) and Nut (4). Tighten hardware.



3

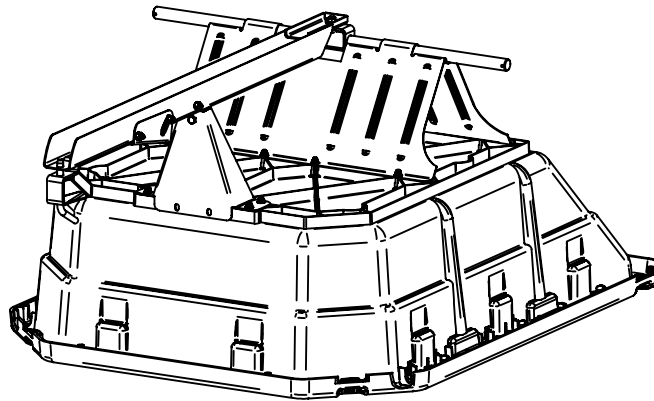
Insert Axle (13) into Undercarriage (2) halfway as shown. Center the large Spacer (9) inside Swivel Clevis (16) and align with Axle (13).



Assembly Instructions

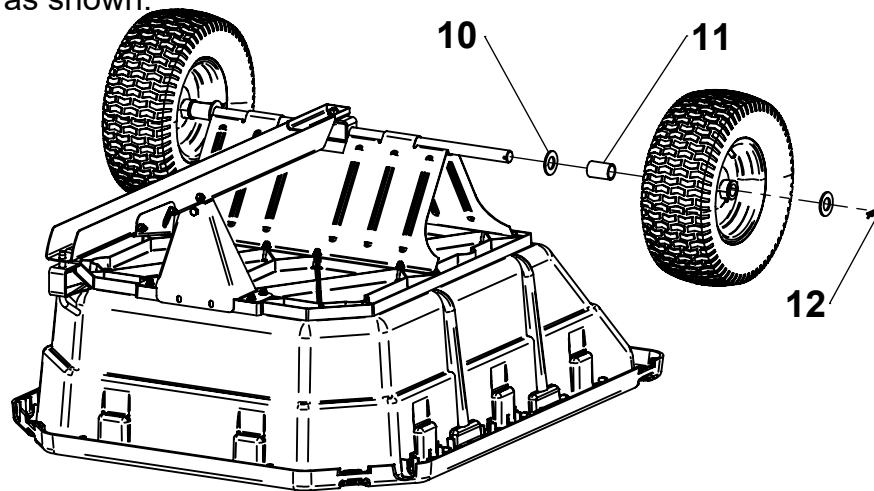
4

Slide Axle (13) completely through Undercarriage (2); Swivel Clevis (17) and the large Spacer (9) must be captured by Axle. Align Drawbar (16) with Front Support (5) and press down to latch.



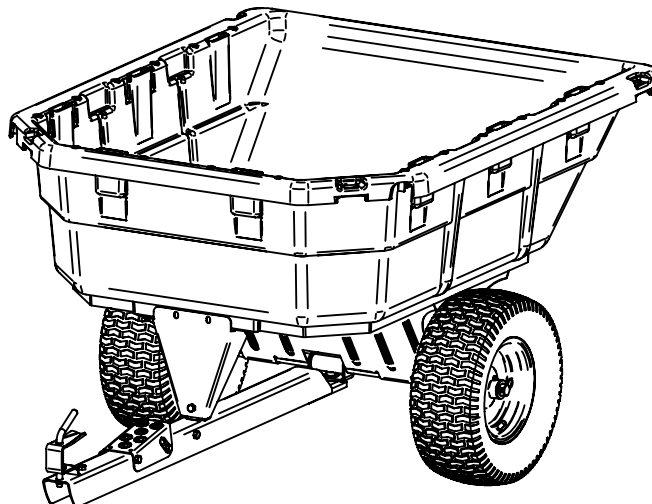
5

Slide Washers (10), Short Spacers (11) and Wheels (14) onto Axle (13) and secure with Cotter Pins (12) as shown.



6

Cart assembly is now complete. Check tire pressure regularly and ensure that all hardware is tight prior to use.



Operating Instructions

Before Using Dump Cart:

1. Apply grease to wheels using grease gun until grease can be seen squeezing out from both sides of the wheel.
2. Check tire pressure and inflate if needed. Reference PSI rating on wheel.
3. Read all Safety Rules found on page 1.

How to Use Dump Cart:

1. Attach Dump Cart to your tractor using the supplied hitch pin.
2. Do not exceed 1200 pounds when loading material into the cart body.
3. Distribute the weight of the load as evenly as possible in the cart body for best handling.
4. When hauling heavy loads, verify that your vehicle has adequate towing and braking capacity.
5. Do not exceed 6 miles per hour when towing Dump Cart.

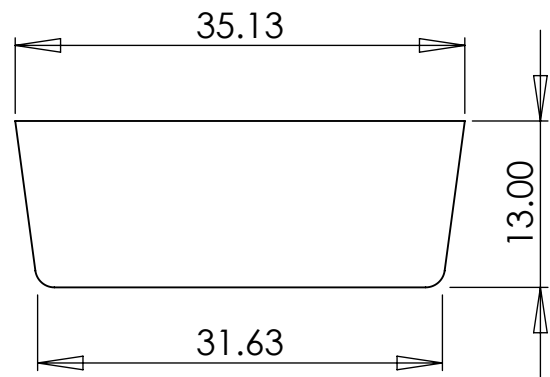
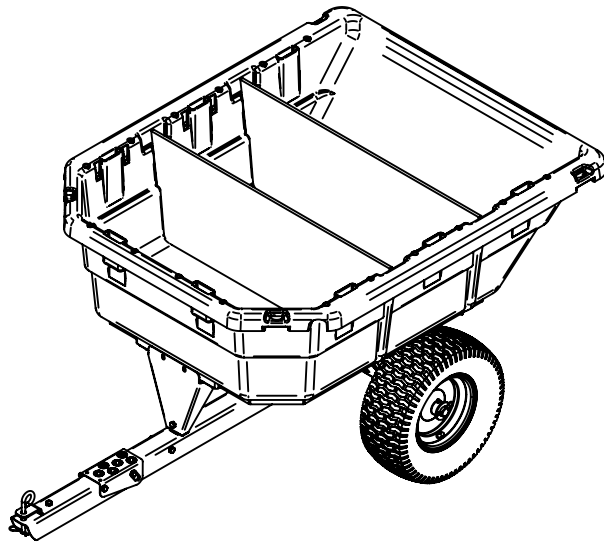
How to Empty Dump Cart:

1. Step down the foot pedal to release the latch mechanism.
2. Lift the body and swivel as desired to guide the material to preferred location.
3. Lift the body entirely and empty material.
4. Lower the body and guide the latch into the drawbar and relatch.

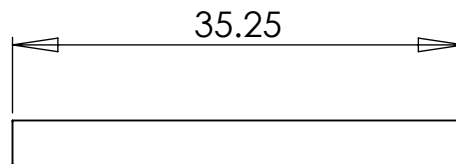
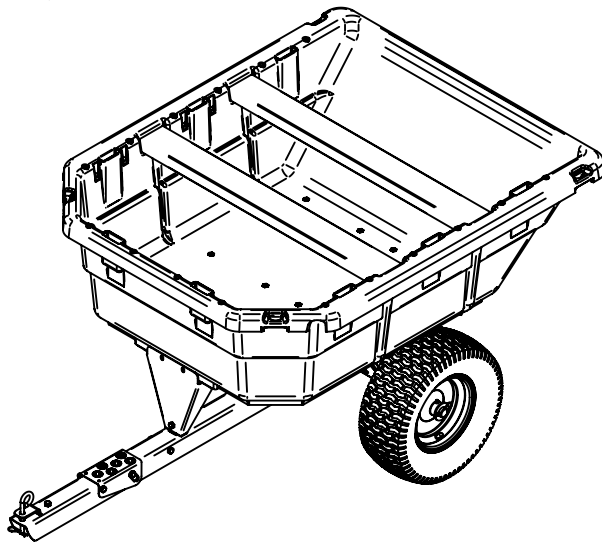
Periodic Maintenance:

- Tighten fasteners as needed before each use
- Check tire pressure before each use
- Grease wheels annually

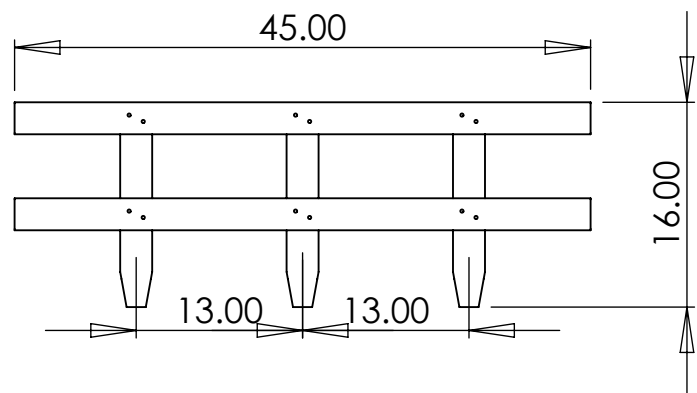
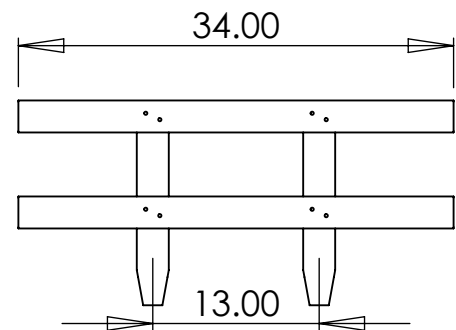
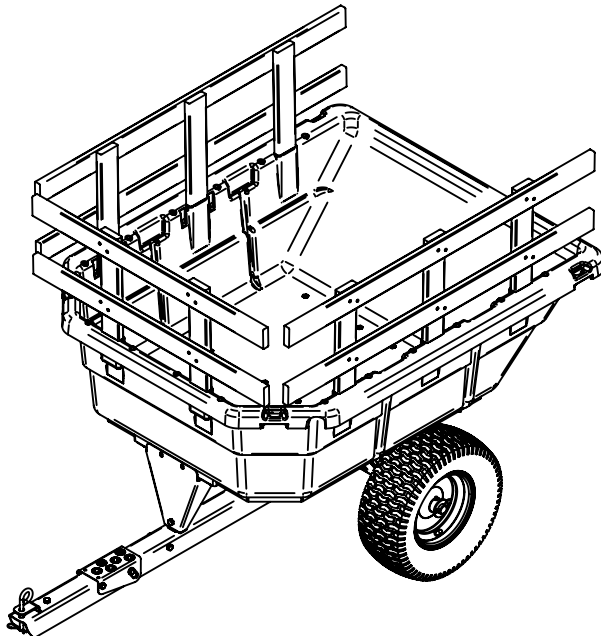
Do-It-Yourself Accessories



USE 1/2" PLYWOOD

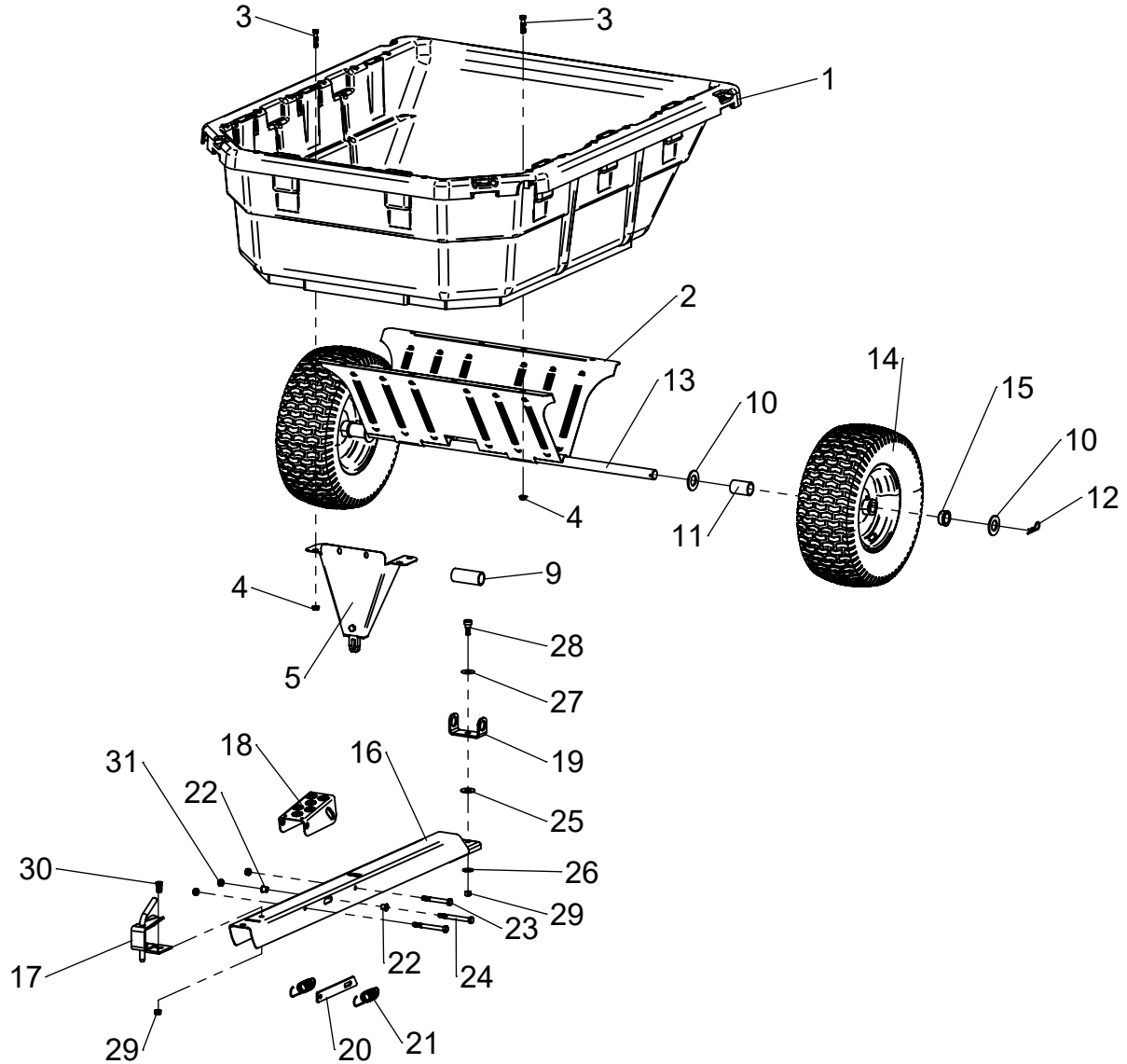


USE STANDARD 2 X 4



USE NOMINAL GRADE C 1 X 3

Repair Parts



ITEM	PART NO.	DESCRIPTION	QTY	ITEM	PART NO.	DESCRIPTION	QTY
1	GPR300027	BODY, POLY, 12.5 CU FT	1	16	GPR300028	DRAWBAR, FORMED	1
2	GPR300034	UNDERCARRIAGE, 27" X 1"	1	17		BRACKET, HITCH, SPRING LOADED	1
3	GPR300030	HEX BOLT, 5/16-18 X 1-1/2"	12	18		FOOT PEDAL	1
4		HEX NUT, 5/16-18 SPINNER-GRIP (BLACK)	12	19		CLEVIS, BENT, 1"	1
5	GPR300033	FRONT SUPPORT, FORMED	1	20		LATCH (Y. ZINC)	1
6		HEX NUT, 3/8-16 C-LOCK	1	21		SPRING, LATCH, 4-3/4"	2
7		TAB, FRONT SUPPORT	1	22		BUSHING, FOOT PEDAL	2
8		HEX BOLT, 3/8-16 X 3/4" (BLACK)	1	23		HEX BOLT, 3/8-16 X 3" (BLACK)	1
9	GPR300029	SPACER, 1 x 3.125"	1	24		HEX BOLT, 3/8-16 X 3-1/2" (ZINC BLACK)	2
10		WASHER, 1" SAE	4	25		WASHER, 1/2" USS (ZINC)	1
11		SPACER, 1" X 2.000"	2	26		WASHER, 3/8" USS (ZINC)	1
12		COTTER HAIRPIN, 3/32" X 2-5/16"	2	27		WASHER, SPRING, 1/2" (PLAIN)	1
13	GPR300026	AXLE, 1" X 33.875"	1	28		SHOULDER BOLT, 1/2" X 3/8" (PLAIN)	1
14	GPR300035	WHEEL, 16X6.5-8 X 1" (SILVER)	2	29		HEX NUT, 3/8-16 C-LOCK (ZINC)	2
15	GPR300031	KIT, 1" WHEEL BUSHINGS (SET OF 4)	1	30		HEX BOLT, 3/8-16 X 3/4" (ZINC)	1
				31		HEX NUT, 3/8-16 C-LOCK (BLACK)	3

Jrco



MODEL # GWG311138